

CHANNEL LIGHTS are linear lighting systems designed to give the creative mind a creative edge. Utilizing incandescent lamps, channel lights are perfect for bath and theater applications. Meets NEC 520-72 lamp guard standards.

CHANNEL - 2"x 2" cold rolled steel (CRS) or aluminium (SA) housing. Specify length up to 8ft.

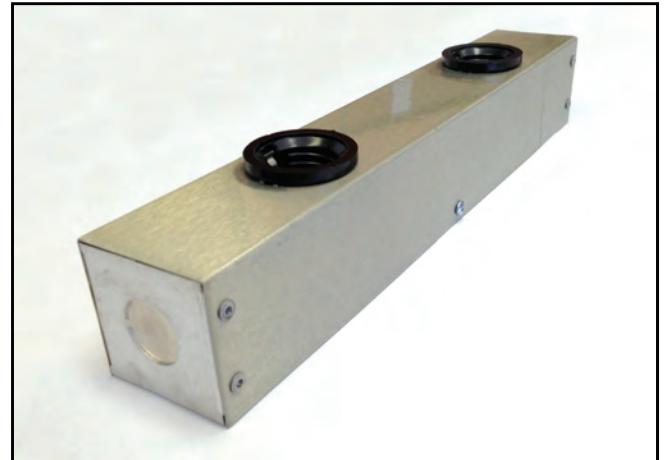
SOCKETS - U.L. listed medium (MED) or candelabra (CAN) base phenolic sockets.

LAMP SPACING - Available in 4", 6", 8", 9", 10", and 12" spacing.

COLOR - Satin aluminium (SA), White (WH), OR Black (BK). Custom colors available.

ACCESSORIES - Wire guards available in Round (RWG) and Hexagonal (HWG).

LISTING - 



HEX and ROUND Wire Guards.

ORDERING INFORMATION

- 1) Socket Base (MED or CAN)
- 2) Insert Lamp Spacing (4, 6, 8, 9, 10 or 12)
- 3) Insert color (SA), (WH), or (BK). Consult factory for custom color options and designations.
- 4) Add Wire Guard designation if required (RWG or HWG).
- 5) Specify length

CNL - _____ - _____ - _____ / Length

EXAMPLE: CHL-MED-6-SA-HWG/8'

(Catalog number for a 6" on center medium base socket, 8' long, satin alluminum channel with hexagon wire guards.)